

# Human LRP-5 Protein

Cat. No. LRP-HM305

## Description

<b>Source</b>	Recombinant Human LRP-5 Protein is expressed from HEK293 with mFc (IgG1) tag at the C-Terminus. It contains Glu644-Gln1263.
<b>Accession</b>	O75197-1
<b>Molecular Weight</b>	The protein has a predicted MW of 96 kDa. Due to glycosylation, the protein migrates to 100-115 kDa based on Bis-Tris PAGE result.
<b>Endotoxin</b>	Less than 1EU per µg by the LAL method.
<b>Purity</b>	> 95% as determined by Bis-Tris PAGE

## Formulation and Storage

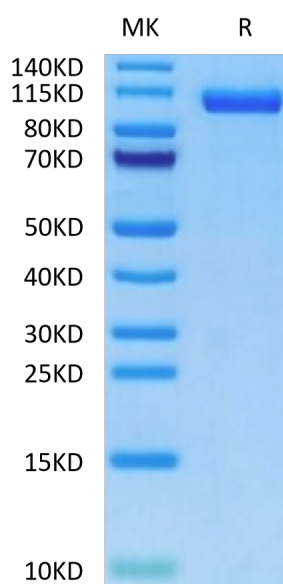
<b>Formulation</b>	Lyophilized from 0.22µm filtered solution in PBS (pH 7.4). Normally 8% trehalose is added as protectant before lyophilization.
<b>Reconstitution</b>	Centrifuge the tube before opening. Reconstituting to a concentration more than 100 µg/ml is recommended. Dissolve the lyophilized protein in distilled water.
<b>Storage</b>	-20 to -80°C for 12 months as supplied from date of receipt. -80°C for 3 months after reconstitution. Recommend to aliquot the protein into smaller quantities for optimal storage. Please minimize freeze-thaw cycles.

## Background

A role for low-density lipoprotein-related receptor 5 (LRP5) in human bone was first established by the identification of genetic alterations that led to dramatic changes in bone mass. Shortly thereafter, mutations that altered the function of the sclerostin (SOST) gene were also associated with altered human bone mass. Subsequent studies of LRP5 and sclerostin have provided important insights into the mechanisms by which these proteins regulate skeletal homeostasis.

## Assay Data

### Bis-Tris PAGE



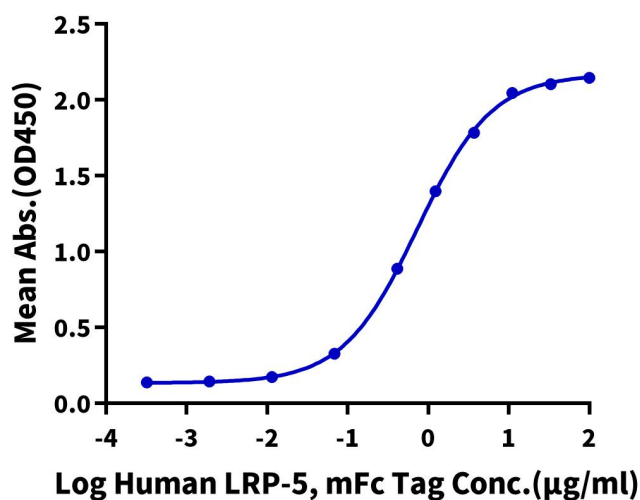
Human LRP-5 on Bis-Tris PAGE under reduced condition. The purity is greater than 95%.

### ELISA Data

## Assay Data

**Human LRP-5, mFc Tag ELISA**

0.5µg Human Wnt Surrogate-Fc Fusion, hFc Tag Per Well

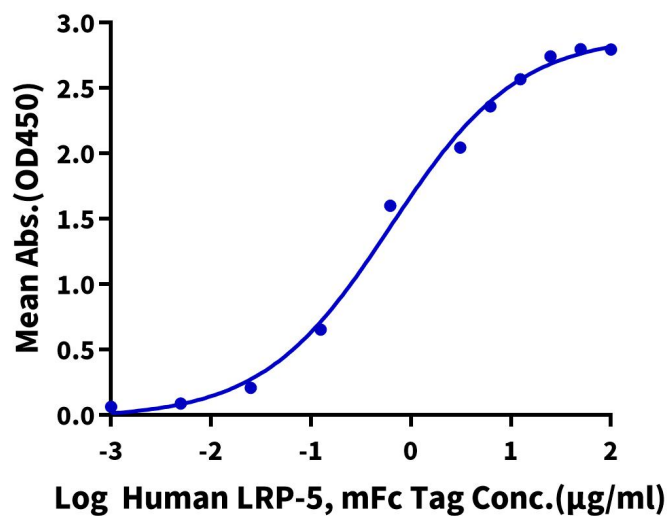


Immobilized Human Wnt Surrogate-Fc Fusion, hFc Tag at 5µg/ml (100µl/well) on the plate. Dose response curve for Human LRP-5, mFc Tag with the EC50 of 0.73µg/ml determined by ELISA (QC Test).

## ELISA Data

**Human LRP-5, mFc Tag ELISA**

0.5µg Human DKK1, His Tag Per Well



Immobilized Human DKK1, His Tag at 5µg/ml (100µl/well) on the plate. Dose response curve for Human LRP-5, mFc Tag with the EC50 of 0.63µg/ml determined by ELISA.